

USER MANUAL

SPARTAN SERIE STAR-Modus D-DRIVE

GENERAL NOTES

All operating codes consist of six characters (digits and / or letters).

The factory set manager code is 1 2 3 4 5 6.

When a keypad button is pressed, the LED will light momentarily. If the keypad beeper is turned on, it will beep at the same time as the LED flashes.

FEATURES

- The manager code can open the lock/change own code / program, delete, lock & unlock the user code.
- The user code can open the lock / change own code.

ENTRY

- All lock codes consist of six numbers and / or letters.
- If you pause more than 10 seconds between button presses, the lock will reset, and you will have to start again.
- ALWAYS LEAVE THE SAFE DOOR OPEN WHEN CHANGING AND CHECKING CODES!

WRONG ENTRY

- If you make a mistake during code entry, press (*) twice or simply wait 10 seconds for the lock to clear, then begin again.
- If five incorrect codes are entered in a row, the lock will enter a three-minute penalty period during which it will not accept input.

SECURITY

- All codes must be kept safe
- Personal data should not be used in creating a code.
- Please contact your dealer for questions and problems

OPERATING INSTRUCTIONS

1. OPENING THE SAFE

1. Enter your 6-digit code, then press (#), turn the keypad a quarter turn right within 5 seconds.

2. CLOSING THE SAFE

1. Close the safe door and turn the keypad a quarter turn back. The lock secures automatically. A double beep takes place.

3. CHANGE MANAGER CODE

3A. CHANGE USER CODE (USERS HAVE TO BE APPROVED BY MANAGERS IN ADVANCE – SEE 4.)

ALWAYS PERFORM WITH DOOR OPEN!

1. Press (2)(2)(*)
2. Enter your current 6-digit-code
3. Press (#) (signal tone will beep five times)
4. Enter your NEW 6-digit-code
5. Press (#) (signal tone will beep three times)
6. Enter your NEW 6-digit-code AGAIN
7. Press (#) (signal tone will beep three times)

CAN BE LOCKED/DELETED BY MANGER AT ANYTIME

1. Press (7)(4)(*)
2. 6-digit manager code (1)(2)(3)(4)(5)(6)
3. Press (#) (signal tone will beep five times)
4. Press (1)(#) (signal tone will beep three times)
5. Enter your desired 6-digit user code
6. Press (#) (signal tone will beep three times)
7. Enter your desired 6-digit user code AGAIN
8. Press (#) (signal tone will beep three times)

5. DISABLE USER CODE

1. Press (5)(5)(*)
2. 6-digit manager code (1)(2)(3)(4)(5)(6)
3. Press (#) (signal tone will beep two times)

6. ENABLE USER CODE

1. Press (5)(5)(*)
2. 6-digit manager code (1)(2)(3)(4)(5)(6)
3. Press (#) (signal tone will beep four times)

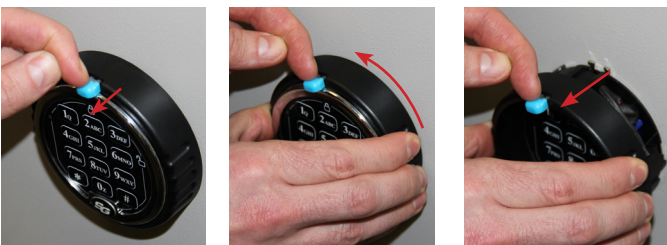
7. DELETE USER CODE

1. Press (7)(4)(*)
2. 6-digit manager code (1)(2)(3)(4)(5)(6)
3. Press (#) (signal tone will beep five times)
4. Press (1)(#) (signal tone will beep three times)
5. Press (#) (signal tone will beep three times)
6. Press (#) (signal tone will beep three times)

8. BATTERY CHECK

1. Press (8)(9)(*)
1 beep = battery weak
2 beeps = battery good

9. BATTERY CHANGE



10. NOTE

If you press any button and hear two long beeps, the lock is indicating that it is in penalty time. Do not press any buttons for at least 3 minutes, then try your code again.

ADDITIONAL OPTIONS – KEYPAD SIGNAL ON/OFF

1. Press (7)(8)(*)
2. 6-digit manager code (1)(2)(3)(4)(5)(6)
3. Press (#) (signal tone will beep five times)
4. Turn off: press (0)(#) 3 x signal tone (0)(#) 3 x signal tone
5. Turn on: press (1)(#) 3x signal tone (1)(#) 3x signal tone